

I N T R O D U C I N G

F315 Universal Joints

Designed for high-horsepower
hydraulic fracturing applications



NEW

An economical solution to meet the demands of greener, next generation fracking processes

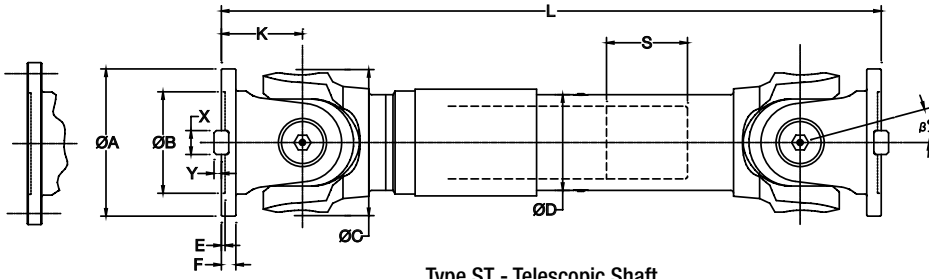
Ameridrives engineers have developed a new U-joint based on the proven design of the popular Ameridrives U3315 model. The economical shaft, with a peak torque rating of 1,100,000 lb.in., can handle the environmentally-friendly, higher horsepower diesel engine and gas turbine drives being utilized on newer trailer-mounted pump packages.

- Increased torque ratings vs. J Series models
- Smaller swing diameter vs. comparable J Series models
- Conventional closed eye design
- One-piece yokes
- 315/350mm DIN style flanges available
- All shafts dynamically balanced
- Manufactured in the heart of Oil & Gas Country. Our facility in San Marcos, Texas, is ideally located to serve the industry.
- Faster response compared to off-shore competitors
- Optional add-on companion flanges

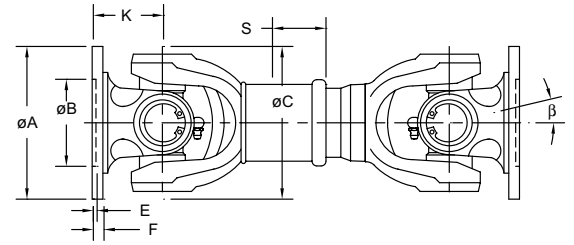
The Ameridrives team of highly experienced application and U-joint engineers is always available to design a modified solution to meet specific customer requirements.



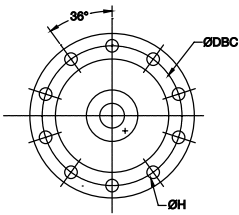
MODEL F315 UNIVERSAL JOINTS



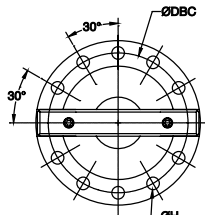
Type ST - Telescopic Shaft



Type SC - Short Coupled Shaft

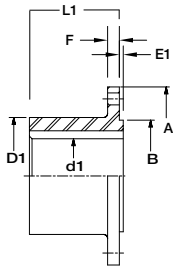


10 Bolt Flange Design

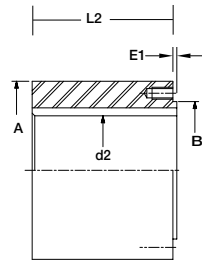


10 Bolt Flange Design with Face Key

F315 COMPANION FLANGES



Design 1 (SF)



Design 2 (SLF)

Size		F315			
Torque Ratings					
		Lb. Ft.		Nm	
T_{dw}		550,000		53,670	
T_k		1,100,000		93,036	
BL		507,400		57,300	
Dimensional Data					
β	15°				
	inch	mm	inch	mm	
A	12.4	315	13.78	350	
B	5.12	130	8.66	220	
C	12.4	315	12.4	315	
D	8.75	222	8.75	222	
E	0.31	8	0.31	8	
F	1.26	32	0.98	25	
K	7.09	180	7.09	180	
DBC	11.02	280	12.2	310	
Bolt Qty.	10	10	10	10	
H	0.91	23	0.87	22	
X	1.57	40	—	—	
Y	0.59	15.00	—	—	
Minimum Length					
	inch		mm		
ST	47.75		1212		
S (ST)	5.51		140		
SC	39.00		990		
S (SC)	3.00		76		

Size	F315			
	inch	mm	inch	mm
A	12.40	315.0	13.78	350.0
B	5.12	130.0	8.66	220.0
E1	0.24	6.0	0.28	7.0
F	1.26	32.0	1.38	35.0
L1	8.07	205.0	9.06	230.0
D1	9.65	245.0	10.83	275.0
d1	6.46	164.0	7.24	184.0
L2	10.24	260.0	11.22	285.0
d2	8.27	210.0	8.98	228.0